

# iQ parts

*when quality counts*



[www.iqparts.com](http://www.iqparts.com)



# From a region with **120 years of tradition**

The Styrian Mürztal is famous for its centuries-old tradition in the iron and steel industry. This region was shaped by numerous innovative companies, which are among the world market leaders in this area.

The main reason for this was and is the Erzberg Mountain, which is part of the Eisenerzer Alps mountain range, on which iron ore has been mined since the 11th century. It is the largest iron ore mine in Central Europe and has the largest siderite deposit in the world. The Styrian Erzberg is 1466 m high and has a total of 24 terrace-like levels. Mining is currently only carried out up to the 21st level.

iQparts can look back on the successful production of wear parts at the St. Barbara im Mürztal site since 1897. Our company's products have always been forerunners in material robustness and in functional technology. Especially for those parts that are exposed to particular stress, the quality and the benefits can be seen in daily use.





# High-quality wear parts for soil cultivation

The quality of manufacturers' original parts is our minimum requirement. Farmers and contractors have to work for profit. Income, as everywhere, depends on the use of material and working hours. Thus, success is determined not least by the service life of wear parts.

Whether sandy or damp, earth is an abrasive that demands a lot from tools under heavy traction. To cope with this, toughness at the stressed areas and elasticity in the body of the parts are required. This is precisely where our innovative strength and our know-how come into play.

Therefore, our **basic quality is the original quality of the manufacturers**. Everything beyond that offers significant benefits. Our higher-quality iQparts save unnecessary working time in regards to frequently replacing parts, and guarantee a long service life.

# Most modern way of processing with excellent forging quality

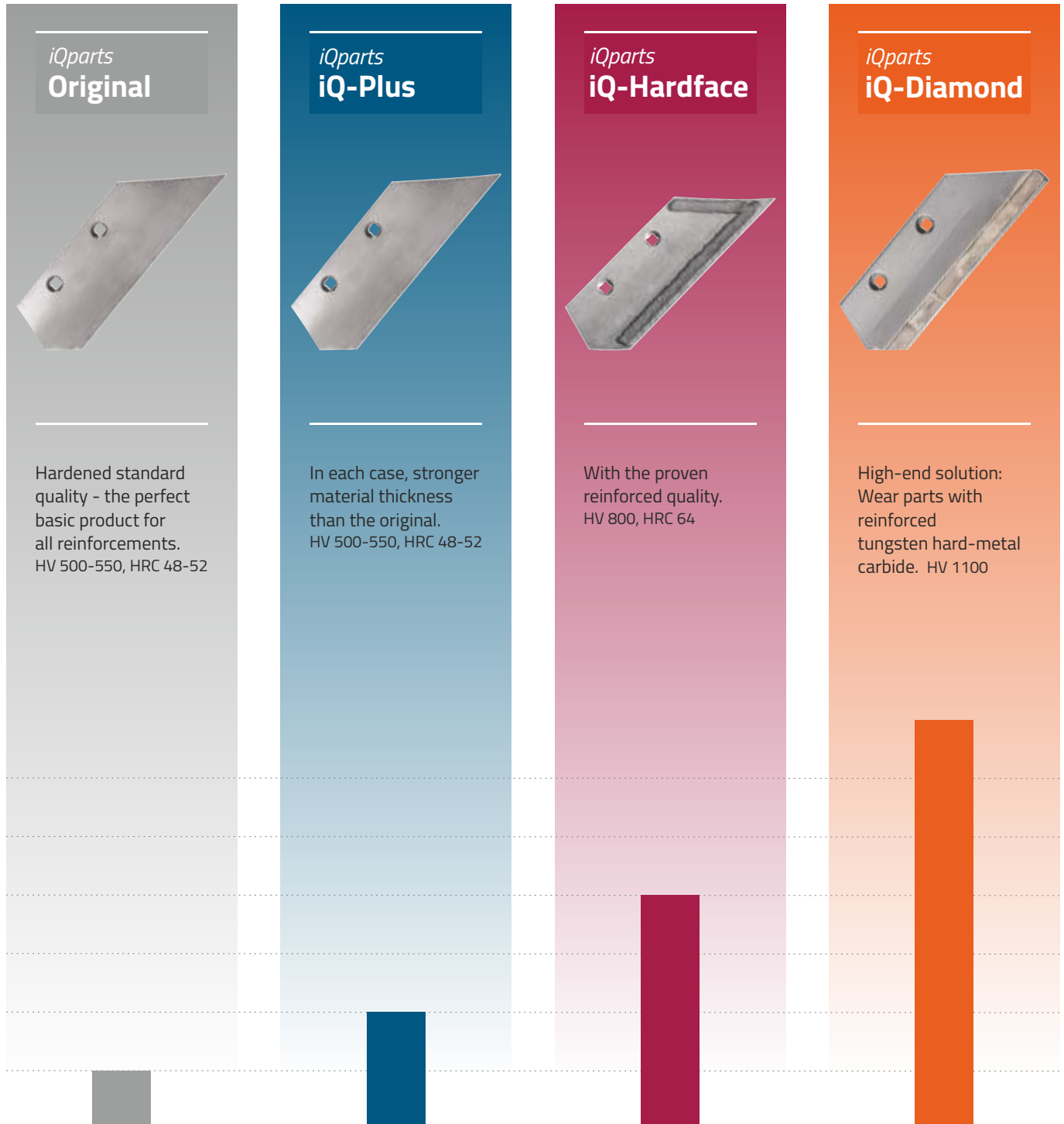


- 1 More wear material**  
much longer service life
- 2 160 % harder**  
less wear
- 3 25 % wider**  
longer service life



- Tradition combined with state-of-the-art technology
  - State-of-the-art CNC-controlled post-treatment
  - Employee training programmes, expert training
    - Laboratory
    - Quality through rolling

# Our quality levels to meet high demands

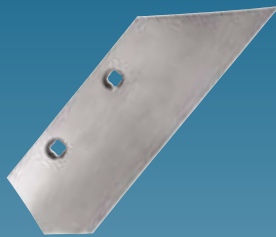


*iQparts*  
**Original**



Hardened standard quality - the perfect basic product for all reinforcements.  
HV 500-550, HRC 48-52

*iQparts*  
**iQ-Plus**



In each case, stronger material thickness than the original.  
HV 500-550, HRC 48-52

*iQparts*  
**iQ-Hardface**



With the proven reinforced quality.  
HV 800, HRC 64

*iQparts*  
**iQ-Diamond**

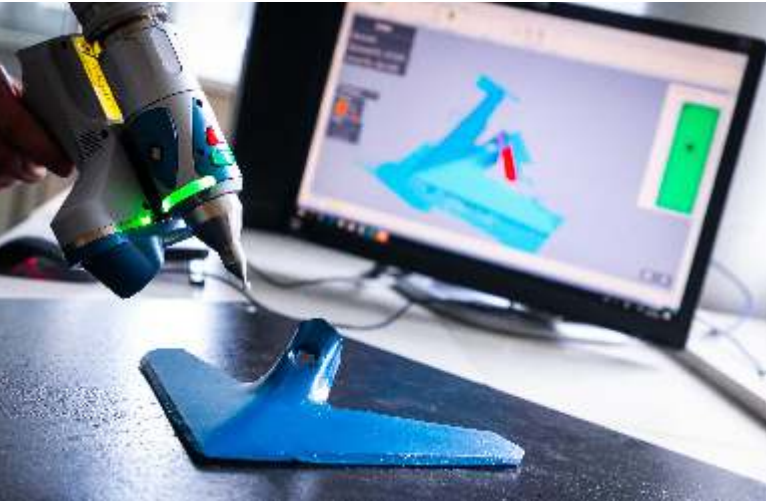


High-end solution: Wear parts with reinforced tungsten hard-metal carbide. HV 1100

- Longer life than the original part
  - Improvement in layer structure and shaping as well
    - Premium quality for the highest demands
      - *iQparts* as a partner to the original equipment industry

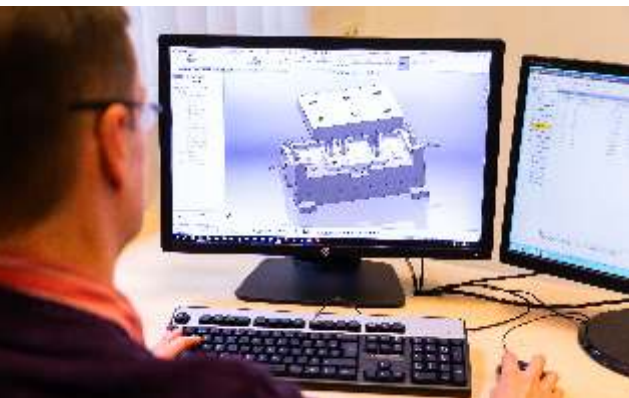


# Ensuring quality by innovation



*iQparts* are well-thought-out quality products that are developed and manufactured in-house. We use the best designers and developers and are in constant contact with our customers in order to become familiar with the requirements of the market.

**We also offer products in other areas beyond agricultural technology**, such as municipal technology, wood or vehicle industry, for composting plants, conveyor belts, construction machinery, piste equipment, stone crushers, etc.



#### **Endurance tests and quality controls!**

Our laboratory tests each product and carries out practical endurance tests.



- **We know exactly what our customers need!**

In-house construction and product development.

- **Logistics and ERP!** Optimal logistics solutions and the integration of our products into your ERP help to facilitate handling.

# iQparts fit:

- AGRISEM
- AGROLUX
- AMAZONE
- AVR
- BASELIER
- BBG
- BEDNAR
- BUGNOT
- BREVIGLIERI
- DAL-BO
- DIN-TEILE
- DURO
- EBERHARDT
- EINBÖCK
- ERMO
- FARMET
- FORTSCHRITT
- FROST
- GASPARDO
- GASSNER
- GOIZIN
- GREAT PLAINS
- GREGOIRE BESSON
- GUTZWILLER
- HORSCH
- IHC
- IMT
- IMT-OLT
- JOHN DEERE
- KERNER
- KÖCKERLING
- KMF
- KRONE
- KONGSKILDE
- KUHN/HUARD
- KVERNELAND
- LEMKEN
- MANDAM
- MASCHIO
- MASSEY FERGUSON
- MIPRA
- MORO
- NAUD
- NIEMEYER
- OTT
- ÖVERUM
- POUCHAIN
- PÖTTINGER  
LANDSBERG
- QUIVOGNE
- RABE
- RAZOL
- REGENT
- ROSS-RAUDNICE
- RUMPSTAD
- UNIA
- UNIVERSAL
- VÄDERSTAD
- VENTZKY
- VIGOLO
- VOGEL & NOOT
- WIDDER

Our **product overview** including **accessories** can be found in our **online shop**:

[www.iqparts.com](http://www.iqparts.com)





**Beyne GmbH**

Bundesstraße 8 | A - 8661 St. Barbara im Mürztal

Tel.: +43 3858 6055 411 | Fax: +43 3858 6055 409

[order@iqparts.com](mailto:order@iqparts.com)

[www.iqparts.com](http://www.iqparts.com)